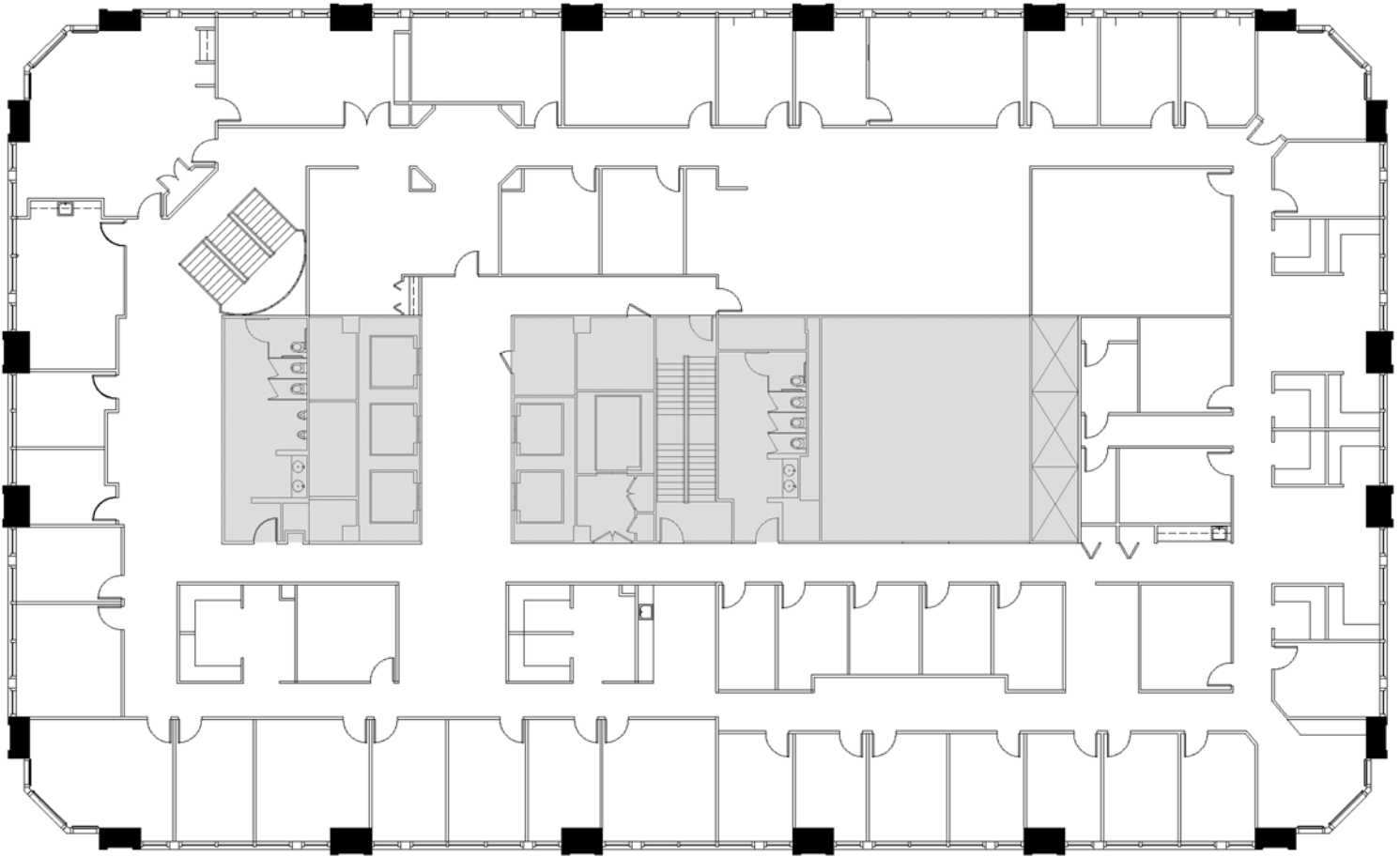


Suite 1800 - 18,755 RSF

225_{west}
WASHINGTON



- (4) 10'X16' OFFICE
- (19) 10'X14' OFFICE
- (1) 9'X14' OFFICE
- (2) 9'X12' OFFICE
- (2) 11'X10' OFFICE
- (2) 14'X15' OFFICE
- (2) 12'X12' OFFICE
- (3) 20'X14' OFFICE

- (2) 15'X16' OFFICE
- (1) 18'X16' OFFICE
- (4) 8'X6' WORKSTATIONS
- (8) 7'X7' WORKSTATIONS
- 25'X14' CONFERENCE ROOM
- 23'X28' CONFERENCE ROOM
- 14'X20' CONFERENCE ROOM

- 45'X32' OPEN WORK AREA
- 25'X14' RECEPTION
- 10'X12' LUNCH ROOM
- 13'X12' IT/STORAGE
- 9'X13' FILE AREA
- 25'X20' FILE/STORAGE
- 12'X7' STORAGE



Golub & Company

For Leasing Information Contact:

Josh Crane
312.440.8747
jcrane@goco.com

Peter Merrion
312.440.8730
pmerrion@goco.com

