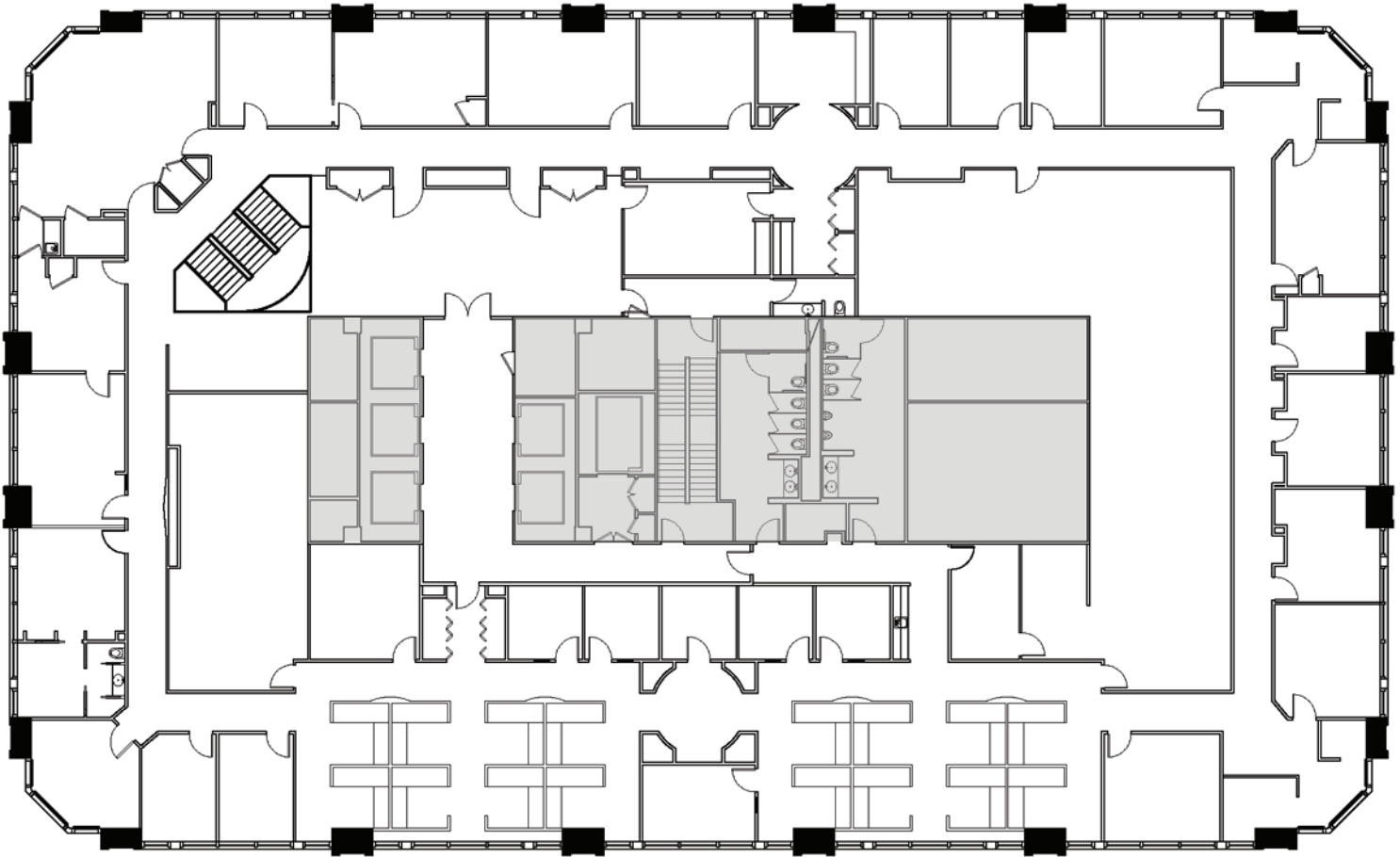


Suite 1900 - 18,755 RSF

225 *w e s t*  
WASHINGTON



- (4) 10'X10' OFFICE
- (7) 10'X14' OFFICE
- (1) 14'X14' OFFICE
- (8) 14'X15' OFFICE
- (4) 8'X10' ADMIN
- (15) 8'X7' WORKSTATIONS

- 40'X16' RECEPTION
- 20'X12' CONFERENCE ROOM
- 20'X14' CONFERENCE ROOM
- 14'X16' CONFERENCE ROOM
- 24'X24' CONFERENCE ROOM
- 10'X10' CONFERENCE ROOM

- 10'X18' OPEN FILE AREA
- 15'X14' PRODUCTION/COPY
- 18'X38' FILE ROOM
- 9'X15' STORAGE
- 2,000 sq/ft IT/FILE/STORAGE



Golub & Company

For Leasing Information Contact:

Josh Crane                      Peter Merrion  
312.440.8747                      312.440.8730  
jcrane@goco.com                      pmerrion@goco.com