

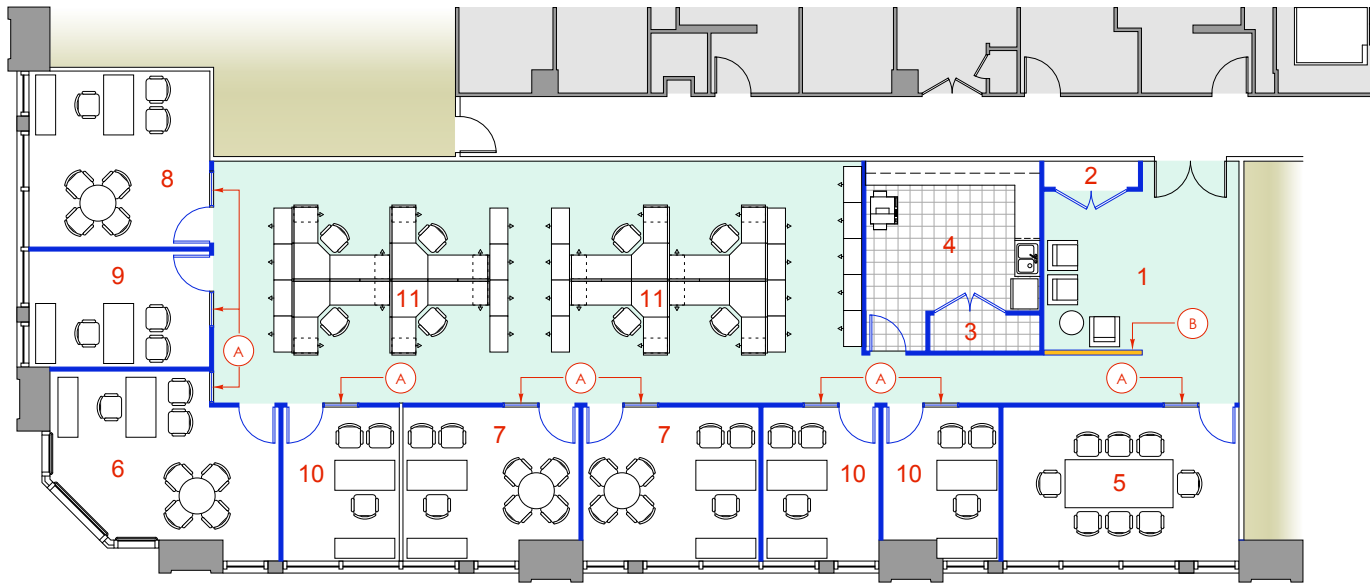
# 225 west WASHINGTON

**GOLUB**

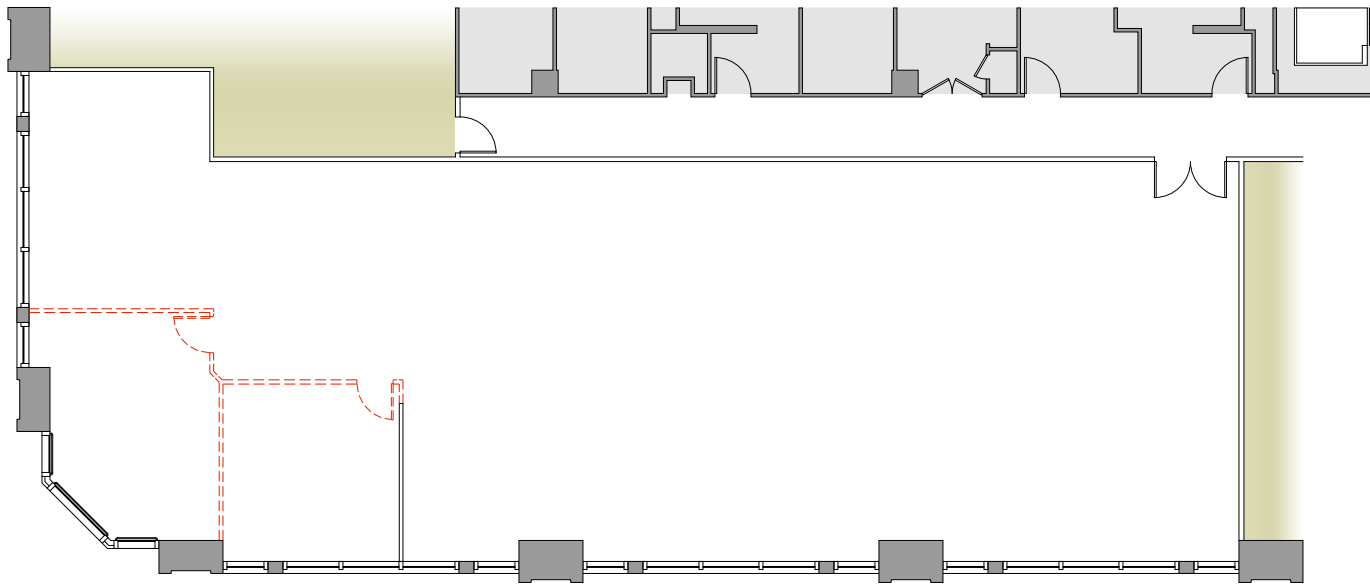
For Leasing Information Contact:

Josh Crane  
Golub & Company  
312.440.8747  
jcrane@goco.com

Peter Merrion  
Golub & Company  
312.440.8730  
pmerrion@goco.com



Space Plan

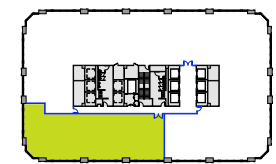


Demo Plan

Key	Room / Area Description	Approx. Size
1	Reception / Waiting	16' x 13'
2	Coat Closet	8' x 2'
3	Network Closet	9' x 3'
4	Coffee / Copy	15' x 12'
5	Conference Room	20' x 13'
6	Private Office	± 20' x 14'
7	Private Office	15' x 13'
8	Private Office	15' x 15'
9	Private Office	15' x 10'
10	Private Office	10' x 13'
11	Staff Workstation	6' x 8'

(A) New 3' wide full height clear tempered glass sidelight panels in a clear anodized aluminum knock-down framing to match the doors.

(B) New partial height partition with a hardwood partition cap to match the doors.



	Building Shell and Core
	Existing Partitions to Remain
	New Demising Partitions
	New Partitions
	New Partial Height Partitions
	Remove Existing Partitions

Suite 1350	4,289 RSF	05/15/07
------------	-----------	----------

<p>ISAAC &amp; MAY, INC.</p> <p>Planning &amp; Design</p> <p>312.953.8596 info@isaacandmay.com</p>	<p>North</p>	<p>2</p> <p>Plan Version No.</p>
--	--------------	----------------------------------