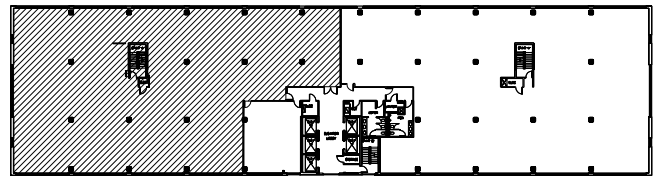


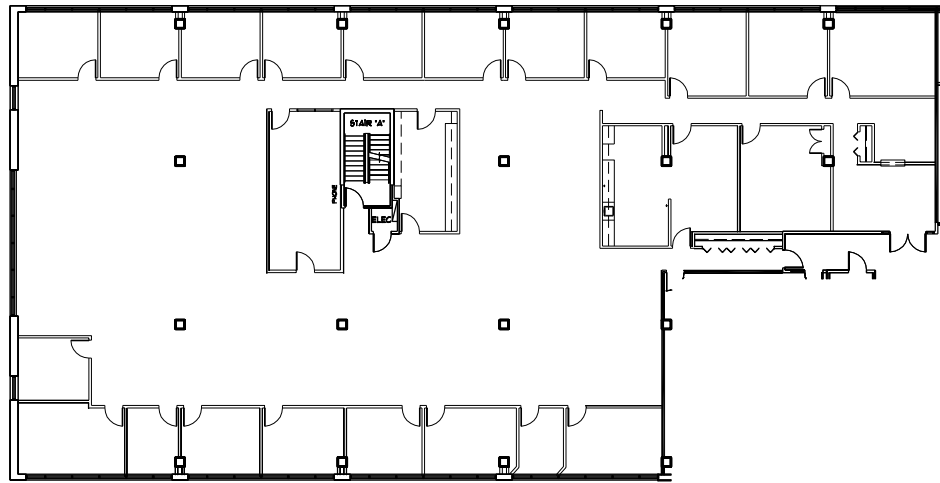


PARK PLACE
EAST & WEST



KEY PLAN

NOT TO SCALE



SUITE 200 - 10,868 R.S.F.

110202

3.19.10

SCALE: 1/32" = 1'-0"



GOLUB & COMPANY



LEASED BY:



CB RICHARD ELLIS

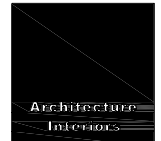
BRIAN WASSERMAN - (952) 924-4681
JIM FREYTAG - (952) 924-4616

PARK PLACE WEST

6465 WAYZATA BLVD.
ST. LOUIS PARK, MN

WCL

Associates, Inc.



4931 West 35th Street
Suite 200
St. Louis Park, Minnesota
55416

T. 952.541-9969
F. 952.541-9554
www.wcla.com