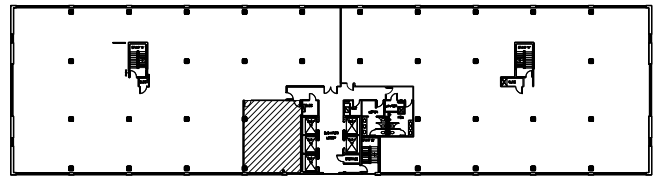
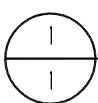
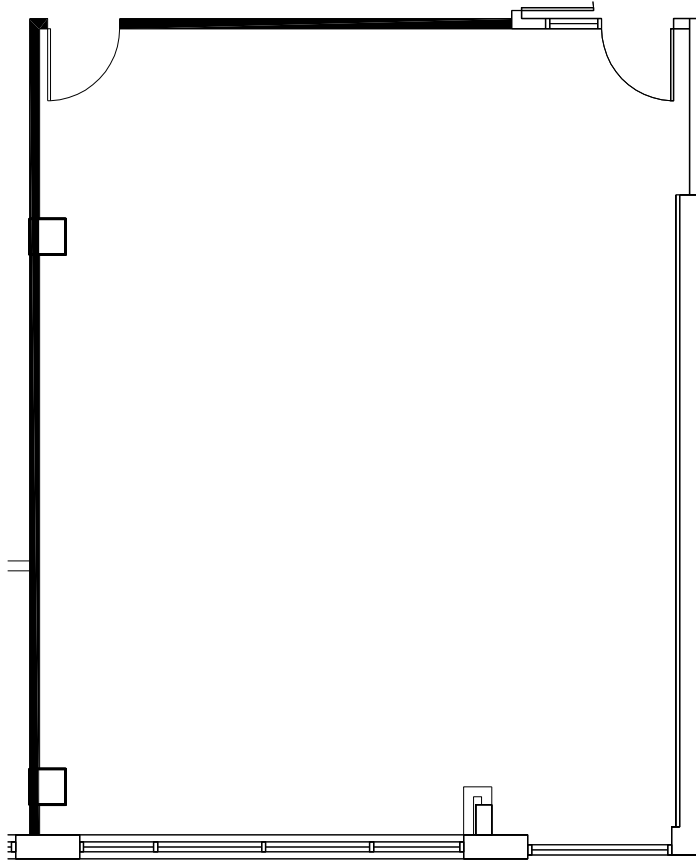
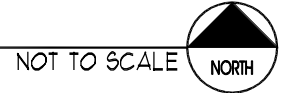




PARK PLACE  
EAST & WEST



KEY PLAN



SUITE 250 - 1,049 R.S.F.

110202

3.19.10

SCALE: 1/8" = 1'-0"



GOLUB & COMPANY



LEASED BY:



BRIAN WASSERMAN - (952) 924-4681  
JIM FREYTAG - (952) 924-4616

PARK PLACE WEST

6465 WAYZATA BLVD.  
ST. LOUIS PARK, MN

WCL

Associates, Inc.



4931 West 35th Street  
Suite 200  
St. Louis Park, Minnesota  
55416  
T. 952.541-9969  
F. 952.541-9554  
www.wcla.com