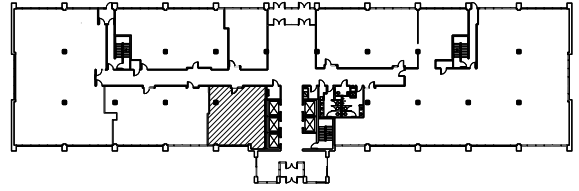


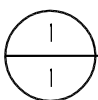
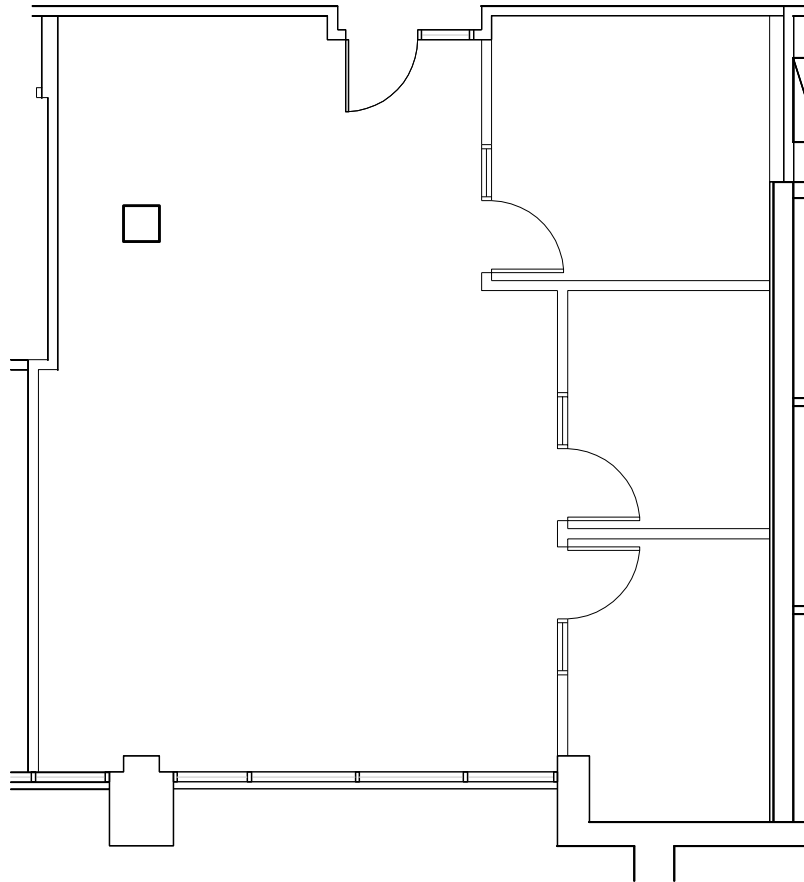


PARK PLACE
EAST & WEST



KEY PLAN

NOT TO SCALE



SUITE 168 - 1,137 R.S.F.

11000

226.10

SCALE: 1/8" = 1'-0"



OWNED & MANAGED BY:

GOLUB

PARK PLACE WEST

6465 WAYZATA BLVD.

ST. LOUIS PARK, MN

WCL
Associates, Inc.



4931 West 35th Street
Suite 200
St. Louis Park, Minnesota
55416

T. 952.541-9969
F. 952.541-9554

www.wcla.com