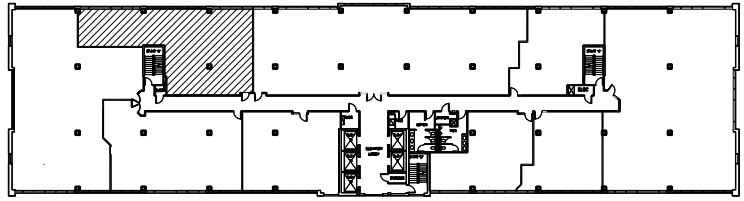




PARK PLACE
EAST & WEST

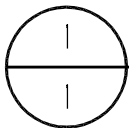
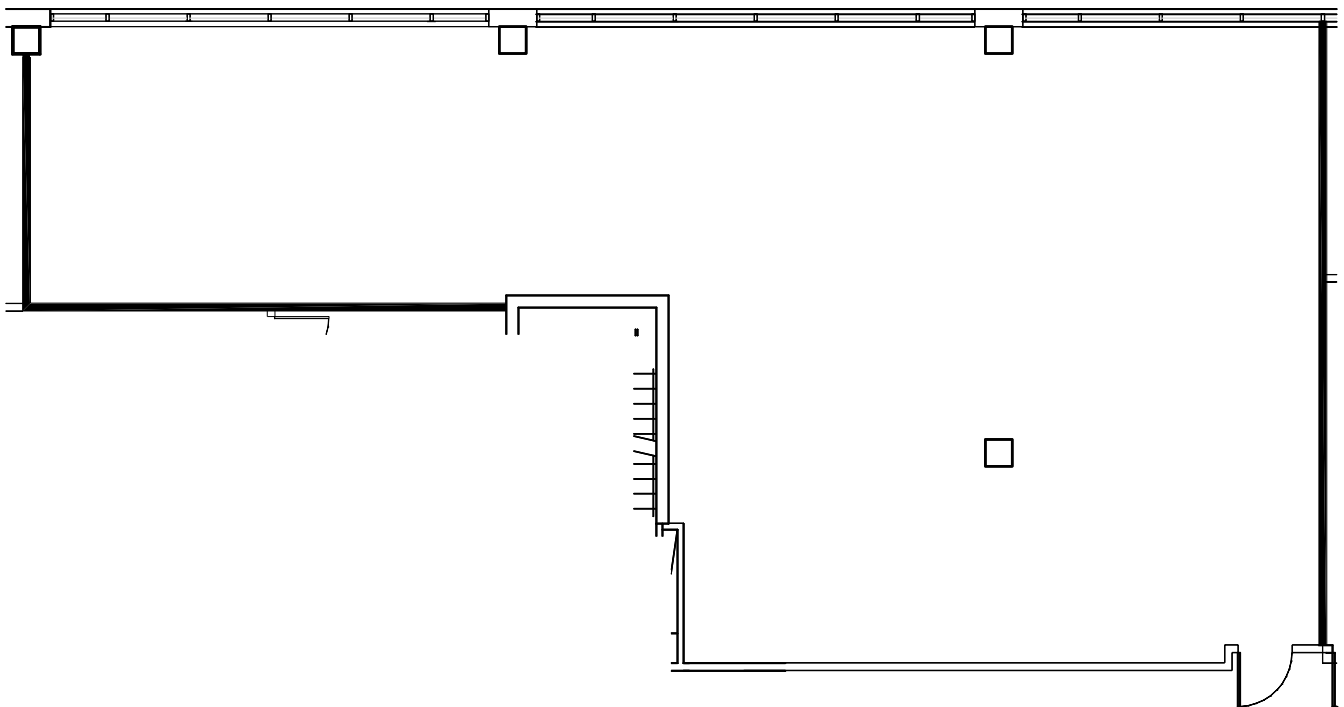


KEY PLAN

NOT TO SCALE



NORTH



SUITE 750 -2,124 RSF

110272

4.21.10

SCALE: 3/32" = 1'-0"



NORTH

OWNED & MANAGED BY:

GOLUB & COMPANY



LEASED BY:



BRIAN WASSERMAN - (952) 924-4681
JIM FREYTAG - (952) 924-4616

PARK PLACE WEST
6465 WAYZATA BLVD.
ST. LOUIS PARK, MN

WCL
Associates, Inc.



4931 West 35th Street
Suite 200
St. Louis Park, Minnesota
55416

T. 952.541-9969
F. 952.541-9554

www.wcla.com