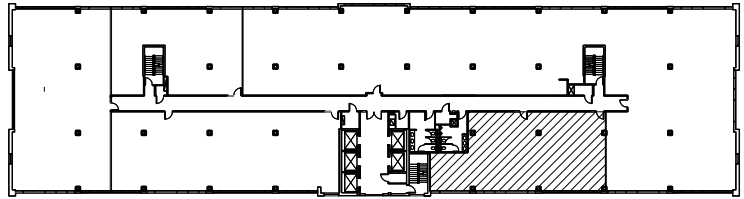


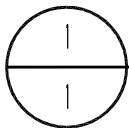
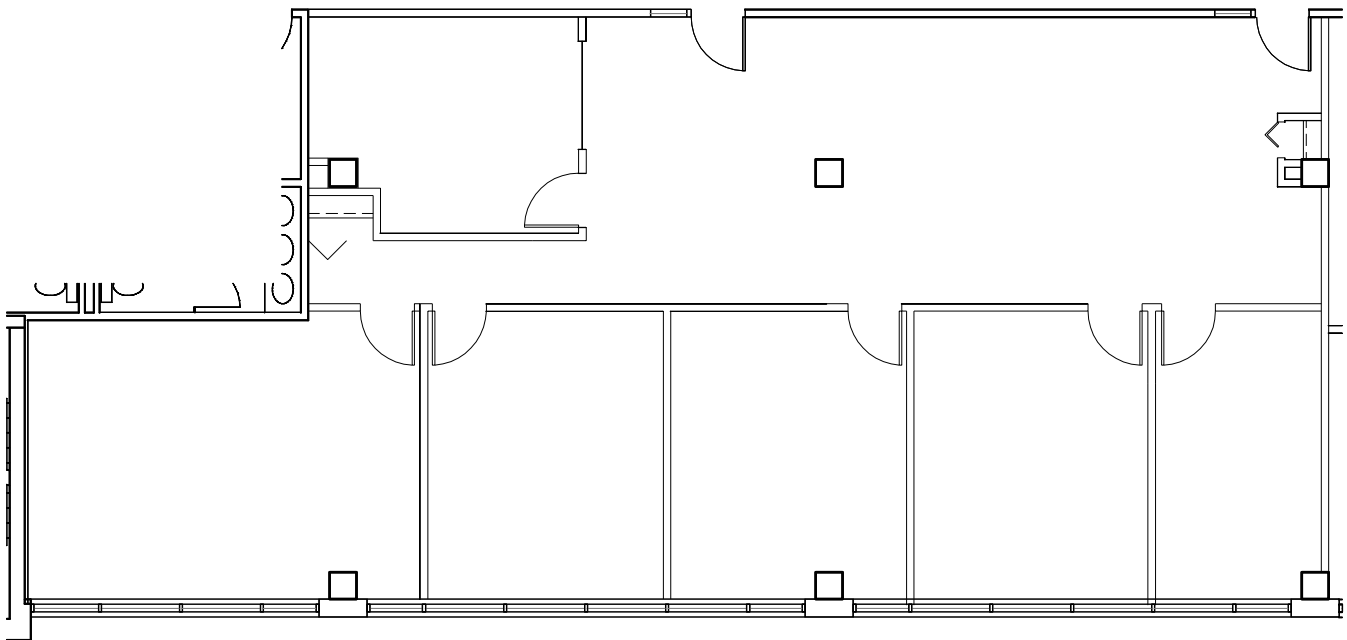


PARK PLACE  
EAST & WEST



KEY PLAN

NOT TO SCALE



SUITE 460 - 2,400 RSF

23.09

10947

SCALE: 3/32" = 1'-0"



OWNED & MANAGED BY:

**GOLUB**

LEASED BY:

**NORTHMARQ**

BOB REVOIR / GREG MCMILLAN  
(952) 831 1000

**PARK PLACE WEST**

6465 WAYZATA BLVD.  
ST. LOUIS PARK, MN

**WCL**  
Associates, Inc.



4931 West 35th Street  
Suite 200  
St. Louis Park, Minnesota  
55416  
T. 952.541-9969  
F. 952.541-9554  
www.wcla.com