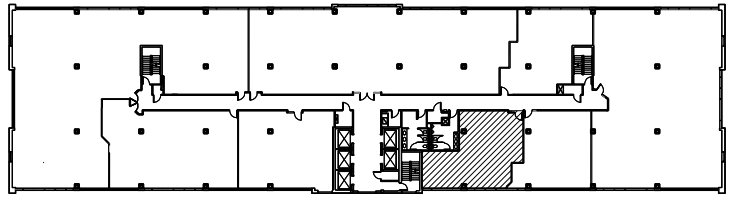


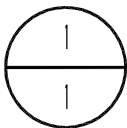
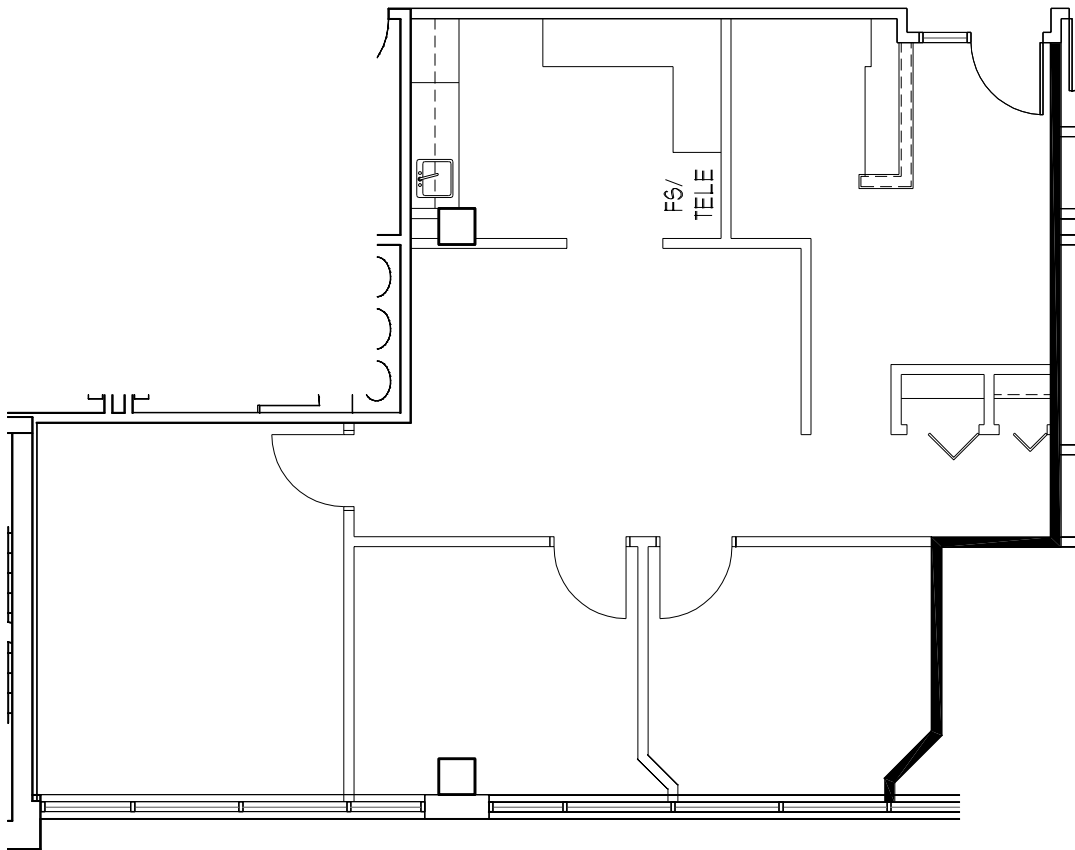


PARK PLACE  
EAST & WEST



KEY PLAN

NOT TO SCALE



SUITE 780 - 1,173 RSF

9.16.09

109419

SCALE: 1/8" = 1'-0"



OWNED & MANAGED BY:

**GOLUB**

LEASED BY:

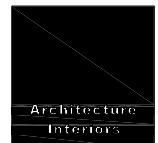
**NORTHMARQ**

BOB REVOIR / GREG McMILLAN  
(952) 831 1000

**PARK PLACE WEST**

6465 WAYZATA BLVD.  
ST. LOUIS PARK, MN

**WCL**  
Associates, Inc.



4931 West 35th Street  
Suite 200  
St. Louis Park, Minnesota  
55416  
T. 952.541-9969  
F. 952.541-9554  
www.wcla.com