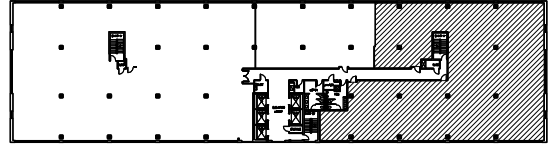


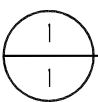
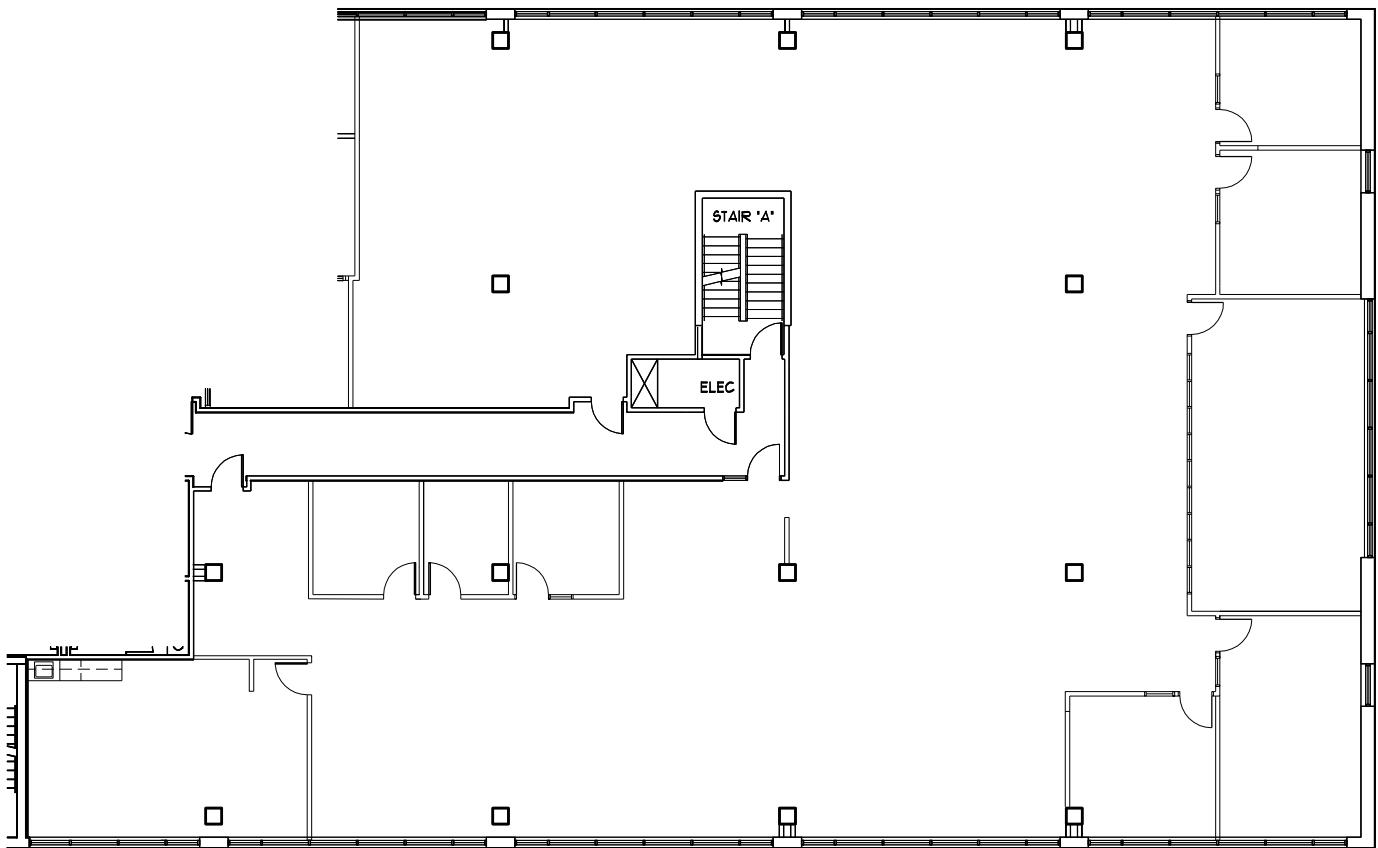


PARK PLACE
EAST & WEST



KEY PLAN

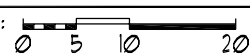
NOT TO SCALE



SUITE 910 = 8,791 R.S.F

10947

SCALE BAR:



2309



OWNED & MANAGED BY:

GOLUB

LEASED BY:

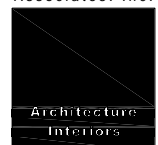
NORTHMARQ

BOB REVOIR / GREG McMILLAN
(952) 831 1000

PARK PLACE WEST

6465 WAYZATA BLVD.
ST. LOUIS PARK, MN

WCL
Associates, Inc.



4931 West 35th Street
Suite 200
St. Louis Park, Minnesota
55416
T. 952.541-9969
F. 952.541-9554
www.wcla.com