

**RIVERVIEW
OFFICE TOWER**

8009 34TH AVE SOUTH
BLOOMINGTON, MN 55425

(MAIN) 952 858-9254
(FAX) 952 858-9700

OWNED & MANAGED BY:

GOLUB

LEASED BY:

NORTHMARQ

DAN GLEASON / JEFF HART
952-831-1000

WCL

Associates, Inc.



4931 West 35th Street
Suite 200
St. Louis Park, Minnesota
55416

T. 952.541-9969
F. 952.541-9554

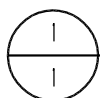
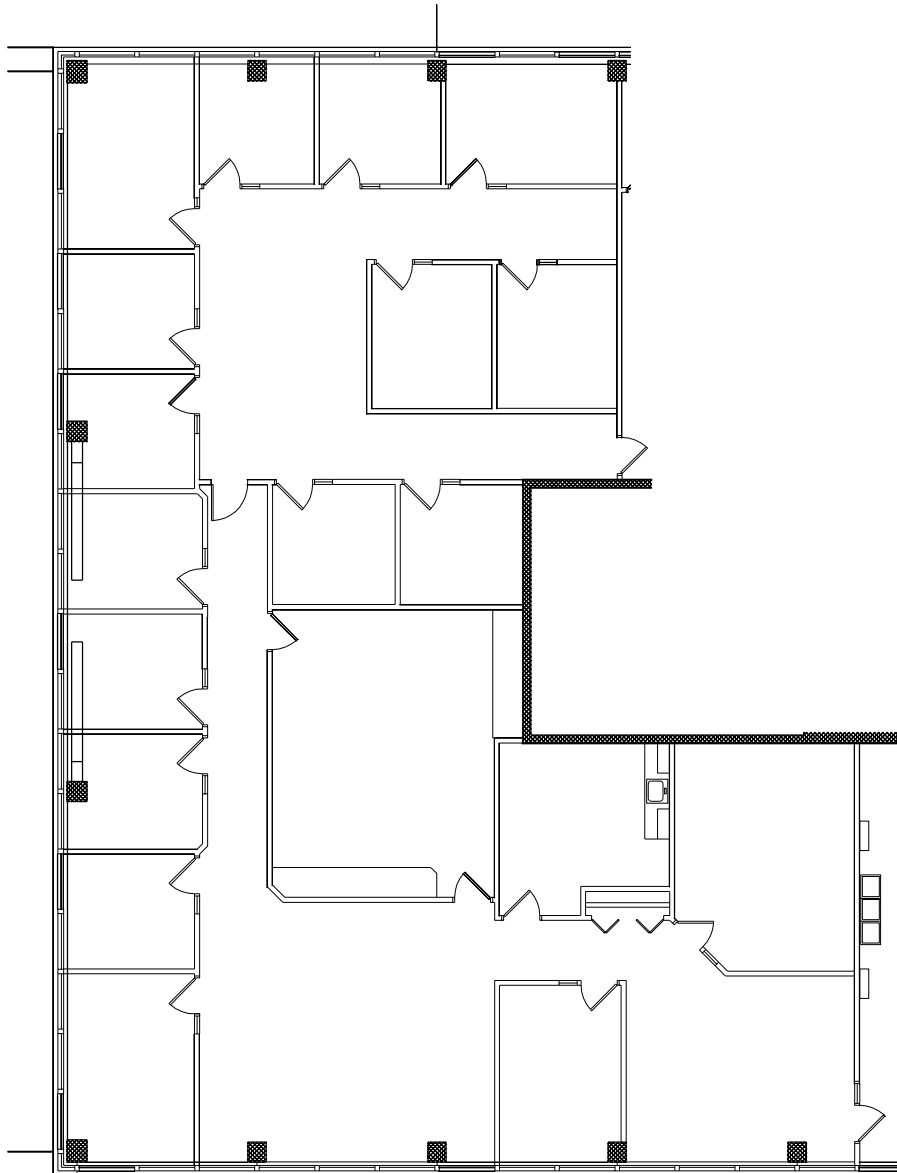
www.wcla.com

AREA: 5,575 R.S.F.

VACANCY PLAN

DATE 8.7.09
PROJECT 109364
DRAWN TTL
CHECKED DS

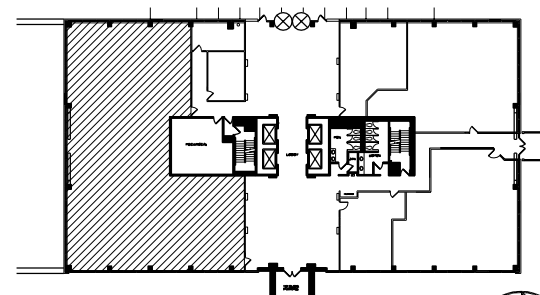
1 OF 1



SUITE 125



SCALE: 1/16" = 1'-0"



KEY PLAN



NOT TO SCALE