

RIVERVIEW OFFICE TOWER

8009 34TH AVE SOUTH
BLOOMINGTON, MN 55425

(MAIN) 952 858-9254
(FAX) 952 858-9700

OWNED & MANAGED BY:

GOLUB

LEASED BY:



UNITED PROPERTIES

DAN GLEASON / MARK STEVENS
952-831-1000

WCL
ASSOCIATES, INC.

ARCHITECTURE
INTERIORS



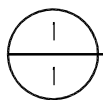
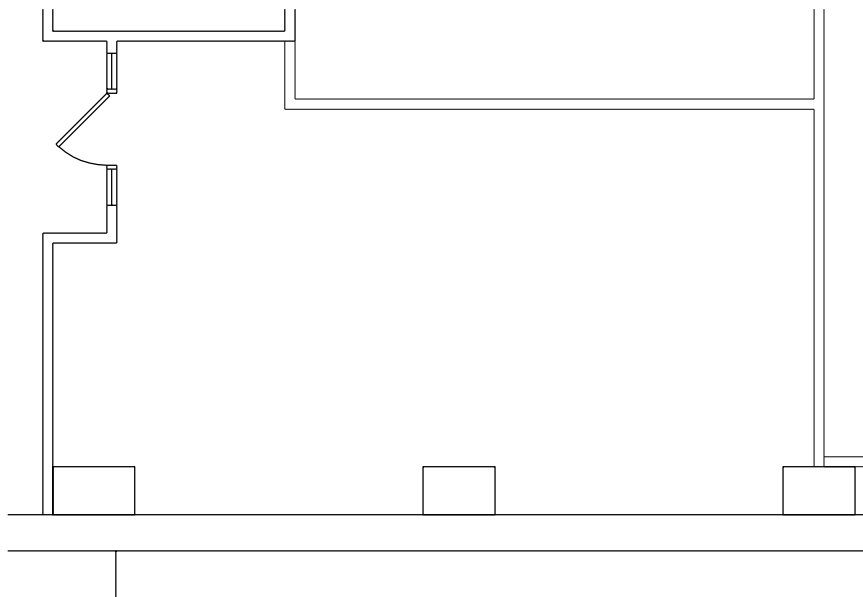
4931 WEST 36TH STREET
SUITE 200
ST. LOUIS PARK, MN. 55416
FAX 952 841-9884
952 841-9969

AREA: 659 R.S.F.

VACANCY PLAN

DATE 11.1.01
PROJECT 107490
DRAWN KMM
CHECKED DS

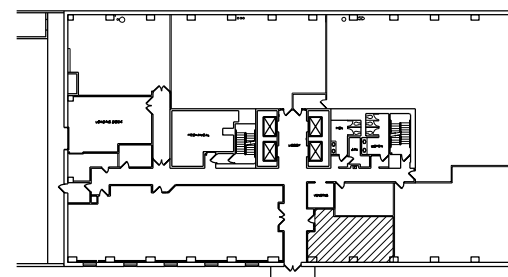
1 OF 1



SUITE 017



SCALE: 1/8" = 1'-0"



KEY PLAN



NOT TO SCALE