

**RIVERVIEW
OFFICE TOWER**

8009 34TH AVE SOUTH
BLOOMINGTON, MN 55425

(MAIN) 952 858-9254
(FAX) 952 858-9700

OWNED & MANAGED BY:

GOLUB

LEASED BY:



UNITED PROPERTIES

DAN GLEASON / JEFF HART
952-831-1000

WCL

ASSOCIATES, INC.

ARCHITECTURE
INTERIORS



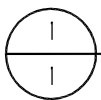
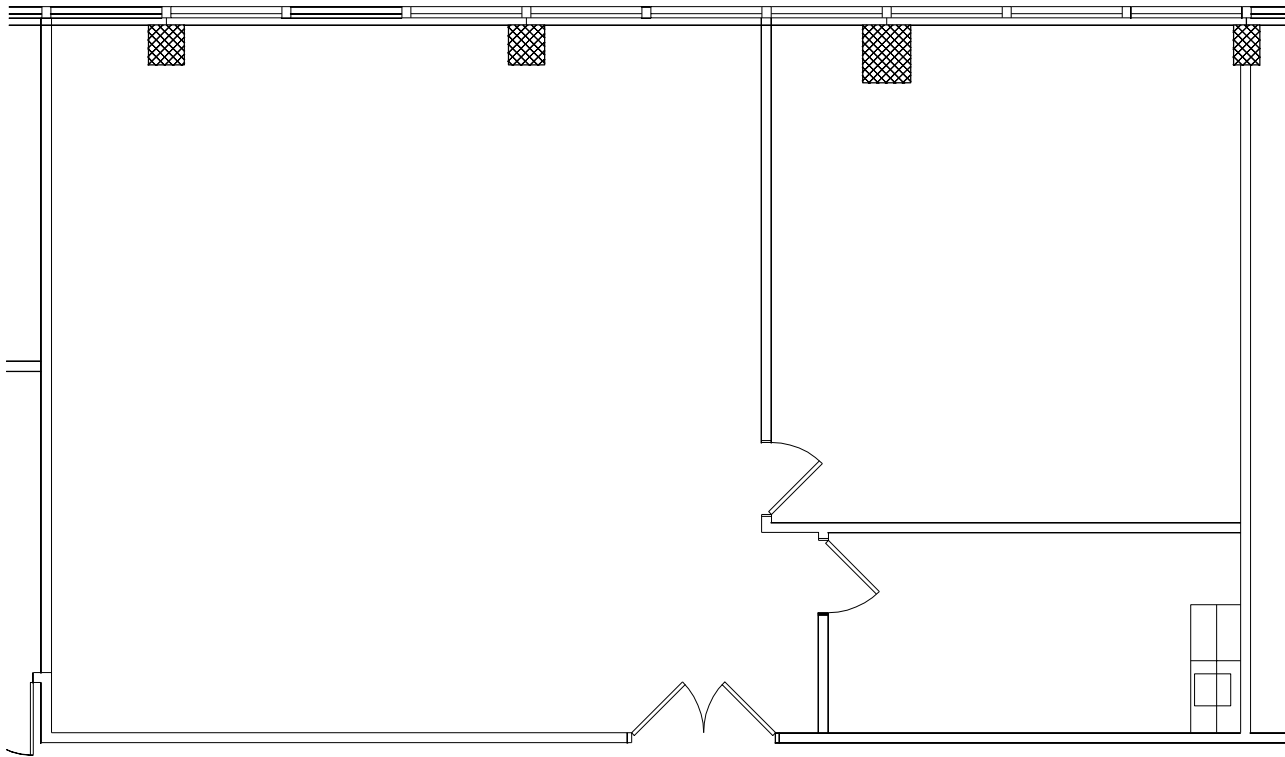
1433 UTICA AVENUE SOUTH
MINNEAPOLIS, MN. 55416
FAX 952 541-9554
952 541-9969

AREA: 1,722 R.S.F.

VACANCY PLAN

DATE 10.10.01
PROJECT 107441
DRAWN KMM
CHECKED DS

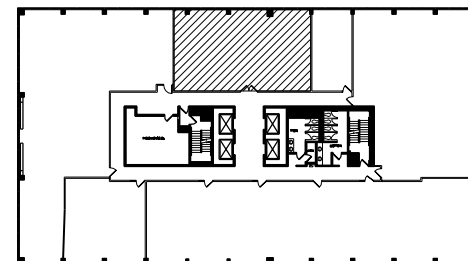
1 OF 1



SUITE 855



SCALE: 1/8" = 1'-0"



KEY PLAN



NOT TO SCALE